

BANDES AVEC FINITIONS ET BANDES CHEVRONS / BELTS WITH TEXTILE IMPRESSIONS AND CHEVRON BELTS

Il existe différents types de finitions qui peuvent être appliquées aux couvertures d'une bande transporteuse / There are different types of finishings that can be applied to the covers of a conveyor belt.

On considère 2 principaux types de finitions / 2 types of finishings will be considered:

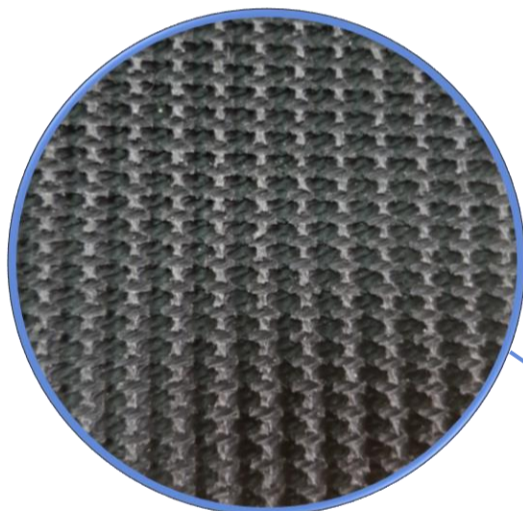
- 1.-IMPRESION TEXTILE / TEXTIL IMPRESSION
 - BANDE RUGUEUSE / Grip Top Belt
 - COURROIE ROUND BALER / Round Baler Belt
- 2.-BANDE CHEVRON / CHEVRON BELT

IMPRESION TEXTILE / TEXTIL IMPRESSION

BANDE RUGUEUSE / GRIP TOP BELT

Bandes avec un revêtement supérieur avec une texture rugueuse. Cela empêche le matériau de glisser sur la bande / These belts have a rough textured top cover. This prevents material from sliding on the belt.

Particulièrement indiqué pour le transport de colis et de sacs dans des environnements inclinés / Particularly suitable for inclined belting of parcels and sacks.

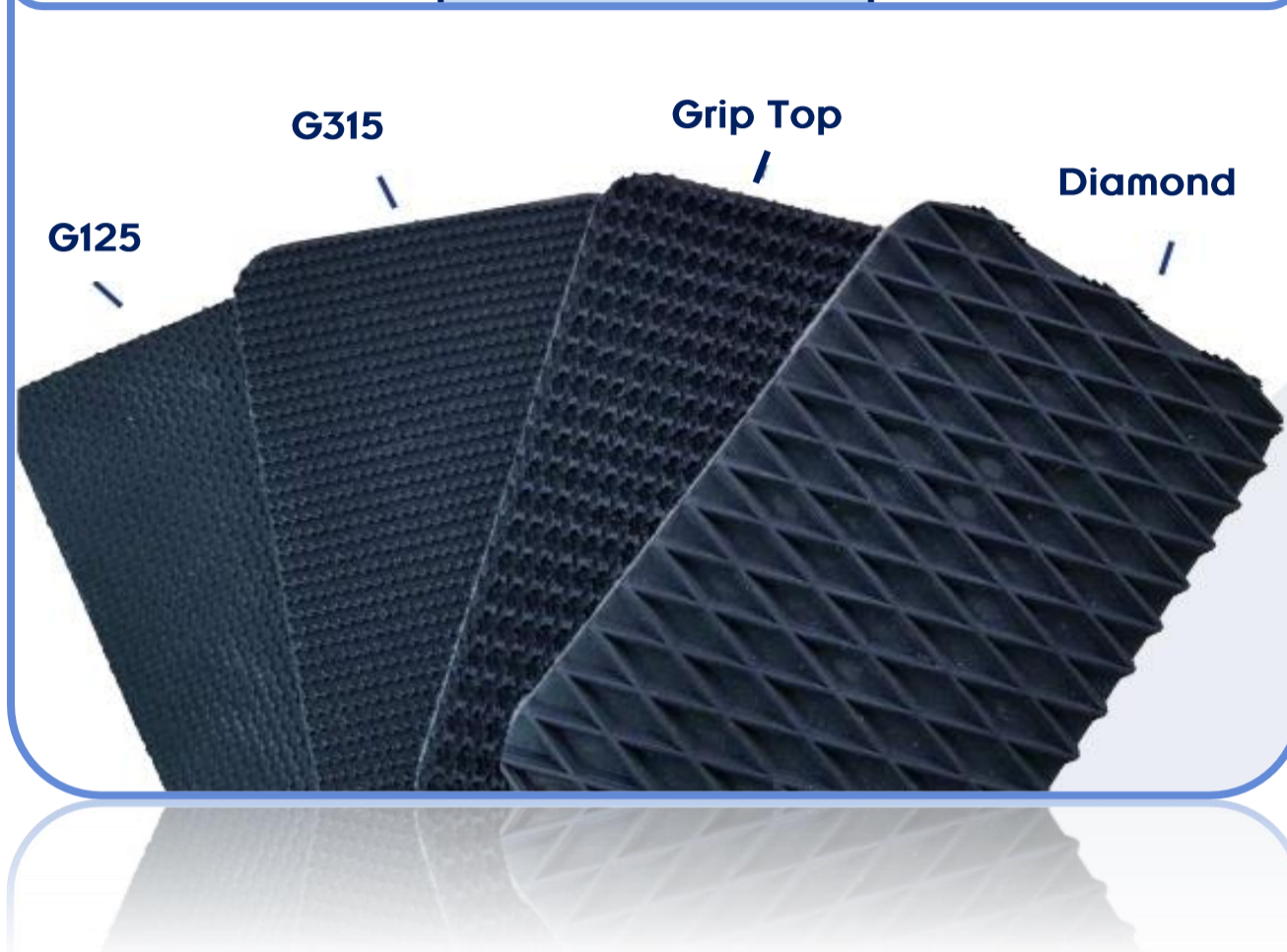


COURROIE ROUND BALER / ROUND BALER BELT

Les courroies Belstiflex® Round Baler sont le dernier développement de notre gamme de produits pour le secteur agricole. Ces bandes sont produites selon les exigences des clients les plus exigeants et sont parfaitement adaptables aux conceptions de machines à roundballer des principaux fabricants du secteur / The Beltsiflex® conveyor belts are the latest development inside of our product range of the agricultural sector. These conveyor belts are produced under the highest customer's demands and they can be adjusted to the main Round Baler machine designs.

Leur combinaison spéciale de tissus à haute résistance en polyester, nylon et aramide, ainsi que des caoutchoucs techniques hautement spécialisés, confèrent à l'ensemble une excellente performance et durée de vie par rapport aux chocs, ainsi qu'un vieillissement lent face la dégradation propre produite par la présence d'humidité / Its special combination of high tensile strength fabric in polyester, nylon and aramid together with the top performance rubbers, give the product set their great properties, long self-life against impacts. The moisture ageing it is also well controlled thanks to the raw materials included.

CARCASA / Carcass	CARA SUPERIOR / Superior Face	CARA INFERIOR / Bottom face
3 tipos / 3 types: RB 400/2 RB 400/3 RB 500/3	4 tipos / 4 types: G125 G315 Grip Top Diamond	2 tipos / 2 types: G125 G315



principaux avantages / Main advantages:

- Produit idéal pour la manipulation de la paille, du foin et de l'herbe avec un taux d'humidité élevé / Suitable product to manage straw, hay and grass balers with a high moisture index.
- Excelente durabilidad / Excellent durability
- Grande résistance aux chocs et aux déchirures / Great impact and tear resistance.
- Excellente charge de rupture et rigidité transversale / Excellent breaking load and transversal stiffness.
- Largeur de produit variable pour répondre aux besoins des clients / Variable product width in order to adjust it to the customer or machine demand.

BANDE CHEVRON / CHEVRON BELT

Bandes conseillées pour le transport de matériel dans des plans inclinés. En fonction de la nature du produit, et le type de bande choisie peuvent arriver à transporter le matériau avec 45° d'inclinaison.

Nous offrons une très large gamme de chevrons divisée en sept types principaux en fonction de la hauteur. Chevrons de 15 mm. , 20 mm. , 25 mm. 30 mm. , 32 mm. , 35 mm. et 50 mm.

Belts recommended for conveying material on sloping surfaces. Depending on the nature of the product and the type of belt chosen, they can convey material with an inclination of 45. We offer a very wide range of chevrons divided into seven main types depending on the height. 15 mm, 20 mm, 25 mm, 30 mm, 32 mm, 35 mm and 50 mm ribs.

Les largeurs varient selon le type de chevrons offrant une gamme de 250 mm. à un maximum de 4.400 mm. (Consulter pour les largeurs plus grandes). / Widths vary depending on the type of chevron, with a range from 250 mm to a maximum of 4.400 mm. (ask about larger widths).

Exemple de dénomination d'une bande chevron / Example of chevron belt denomination:

KAS-15/585 800 EP400/3 3+1,5 Y cc

"KAS": Les 3 premières lettres représentent le type de chevron / The first 3 letters represent the type of chevron.

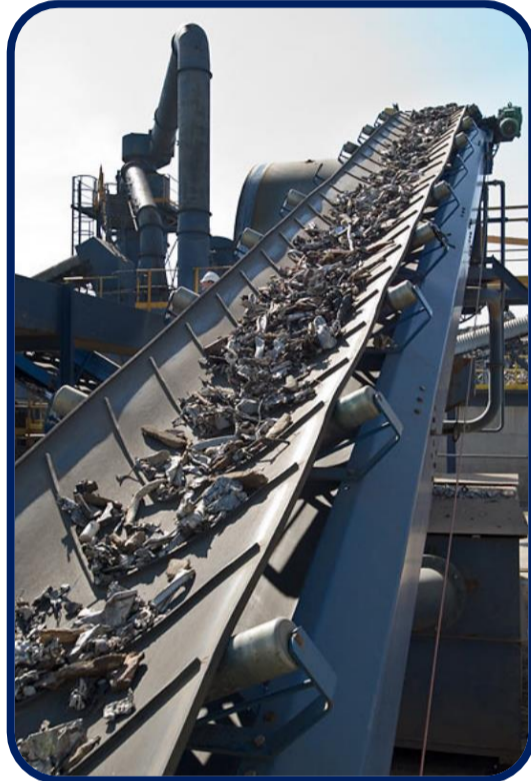
"15": Les 2 chiffres suivants indiquent la hauteur du chevron en millimètres / The next 2 numbers indicate the rib height in millimetres.

"585": Les chiffres suivants font référence à la largeur totale du chevron en millimètres / The next digits refer to the total rib width in millimetres.

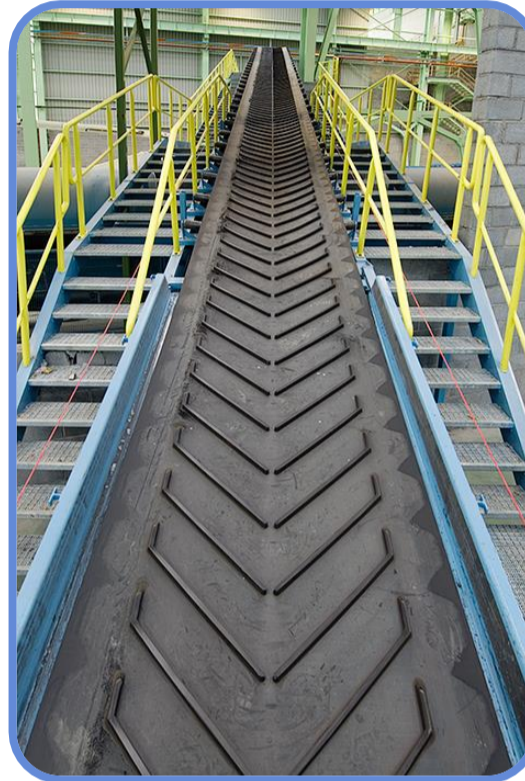
Ensuite, la référence de la bande de base est ajoutée, dans ce cas une bande de 800 mm. / The reference of the base belt is added next, in this case a belt with a width of 800 mm.

Les bandes chevrons peuvent être classées en 2 groupes / Chevron belts can be classified in 2 groups:

CHEVRONS STANDARDS / Standard Production

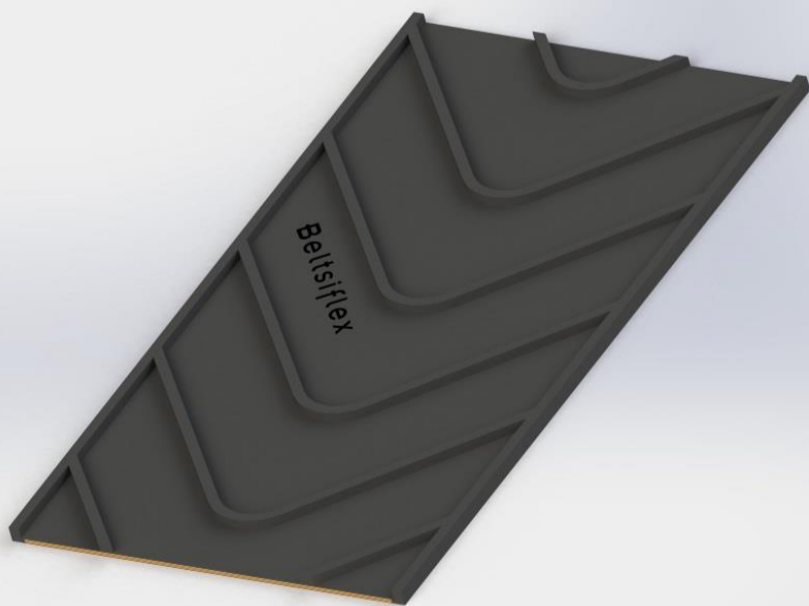


CHEVRONS SPÉCIAUX / Special Production



CHEVRONS STANDARDS / Standard Production

KAN-15



Chevron	Ancho Banda / Belt Width (mm)	Paso / Pitch (mm)
KAN-15/400	400	200
KAN-15/500	500	230
KAN-15/600	600	230
KAN-15/650	650	230
KAN-15/800	800	300
KAN-15/1000	1000	300
KAN-15/1200	1200	200 - 300
KAN-15/1400	1400	200

CHEVRONS STANDARDS / Standard Production



Chevron	Ancho Banda / Belt Width (mm)	Paso / Pitch (mm)
KAF-15/250	400 ÷ 500	150
KAF-15/310	400 ÷ 500	150
KAF-15/400	500	150
KAF-15/480	600 ÷ 650	200
KAF-15/650	800	200



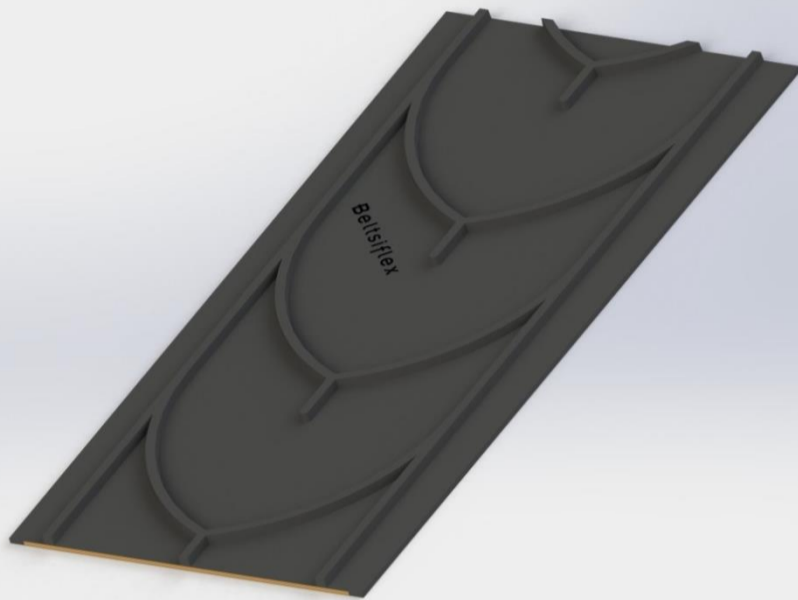
Chevron	Ancho Banda / Belt Width (mm)	Paso / Pitch (mm)
KAS-15/285	400 ÷ 500	145
KAS-15/435	600 ÷ 650	218
KAS-15/520	550 ÷ 650	200
KAS-15/585	700 ÷ 800	250 - 295



Chevron	Ancho Banda / Belt Width (mm)	Paso / Pitch (mm)
KAS-15/750	750 ÷ 1500	317

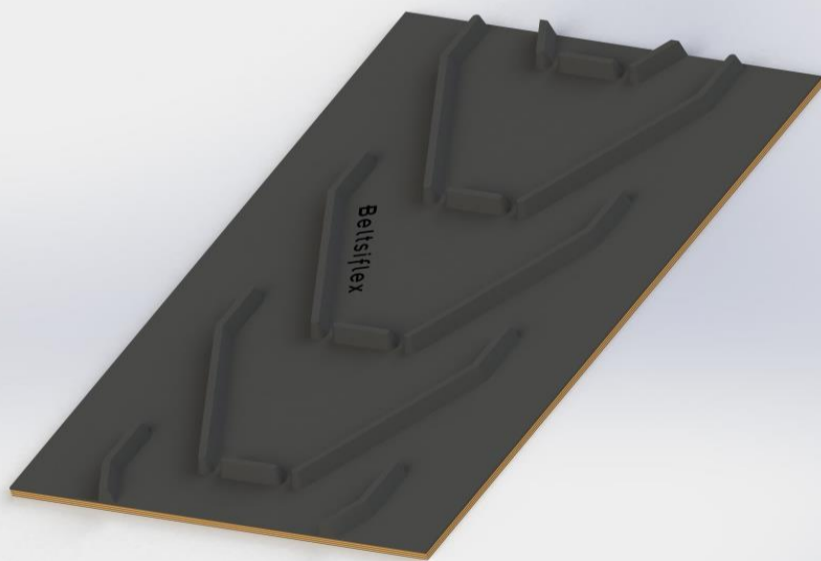
CHEVRONS STANDARDS / Standard Production

KFN-15



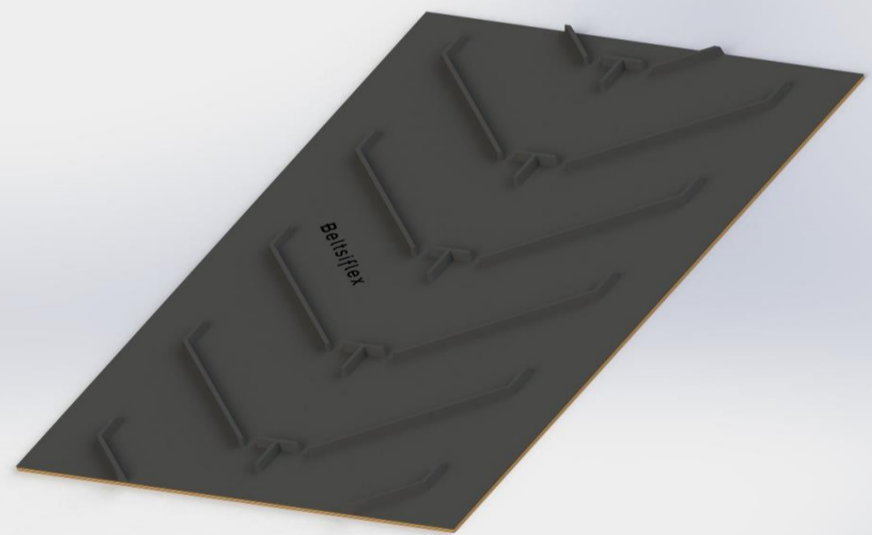
Chevron	Ancho Banda / Belt Width (mm)	Paso / Pitch (mm)
KFN-15/300	300 ÷ 500	333
KFN-15/400	400 ÷ 650	326
KFN-15/500	500 ÷ 650	333
KFN-15/600	600 ÷ 1000	333

KIN-25



Chevron	Ancho Banda / Belt Width (mm)	Paso / Pitch (mm)
KIN-25/450	500 ÷ 800	310
KIN-25/550	600 ÷ 800	330
KIN-25/750	800 ÷ 1400	330 - 450

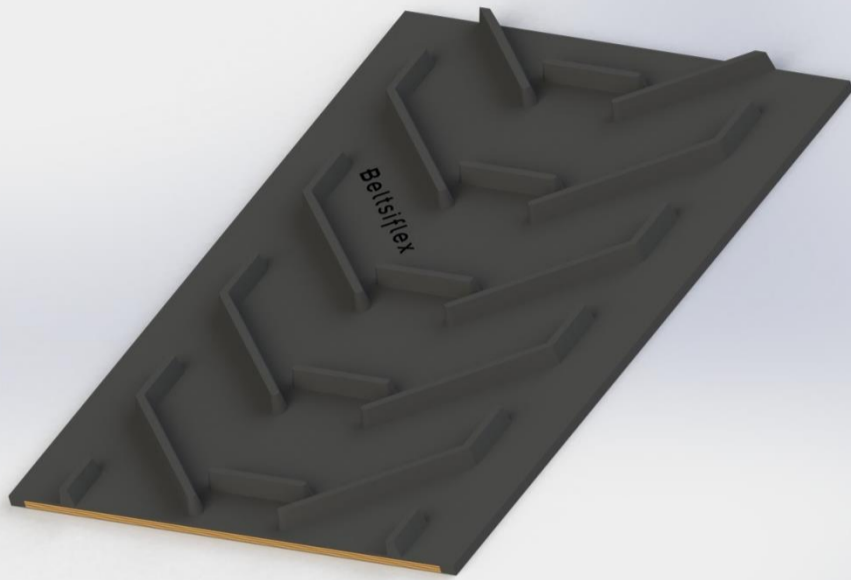
KIN-25



Chevron	Ancho Banda / Belt Width (mm)	Paso / Pitch (mm)
KIN-25/915	1000 ÷ 1600	420

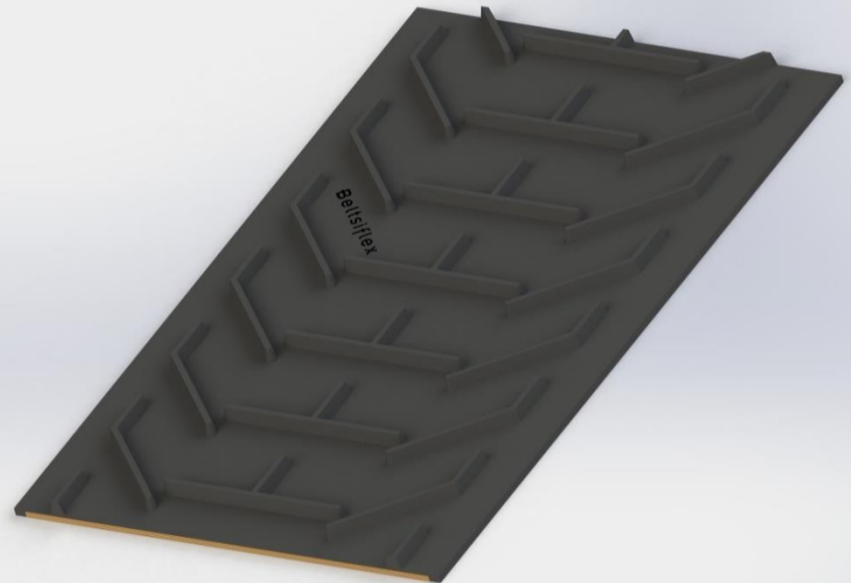
CHEVRONS STANDARDS / Standard Production

KFN-25



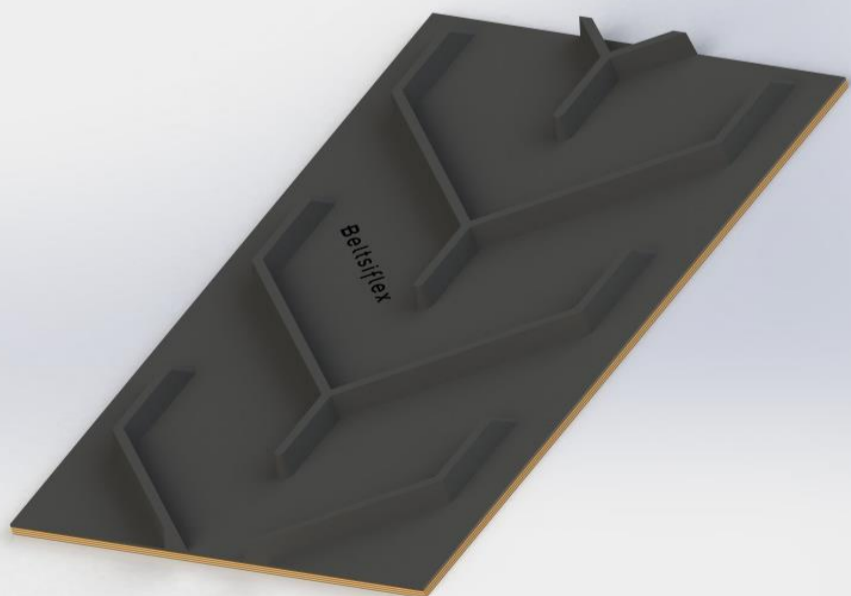
Chevron	Ancho Banda / Belt Width (mm)	Paso / Pitch (mm)
KFN25/360	450 ÷ 700	200
KFN25/460	550 ÷ 800	200

KFN-25



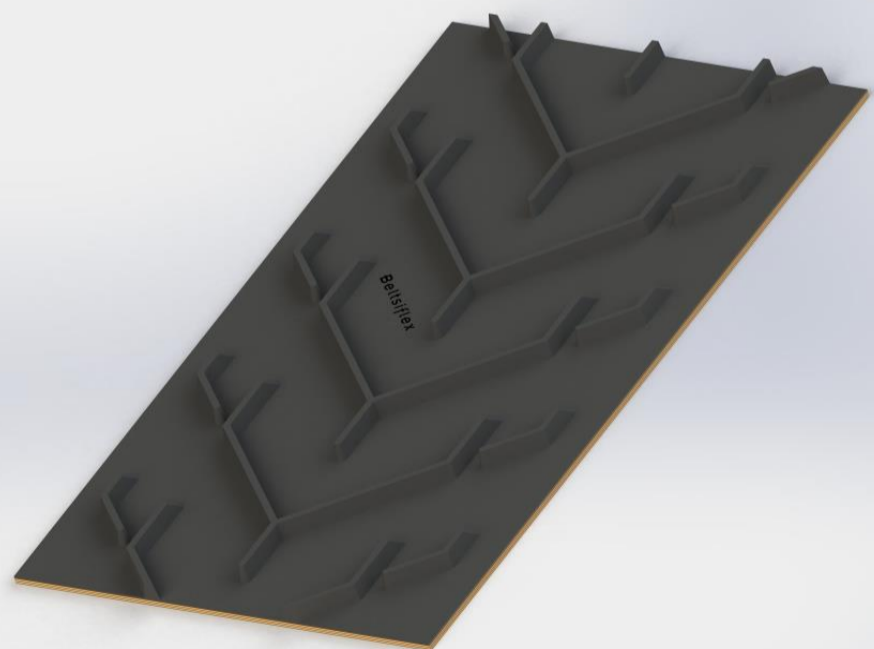
Chevron	Ancho Banda / Belt Width (mm)	Paso / Pitch (mm)
KFN25/560	650 ÷ 900	200
KFN25/660	750 ÷ 1000	200

KAF-32



Chevron	Ancho Banda / Belt Width (mm)	Paso / Pitch (mm)
KAF-32/450	500 ÷ 650	330

KAF-32



Chevron	Ancho Banda / Belt Width (mm)	Paso / Pitch (mm)
KAF-32/680	800	330

CHEVRONS STANDARDS / Standard Production

KAF-32



Chevron	Ancho Banda / Belt Width (mm)	Paso / Pitch (mm)
KAF-32/880	1000 ÷ 1200	330

KAF-32



Chevron	Ancho Banda / Belt Width (mm)	Paso / Pitch (mm)
KAF-32/1280	1400	330

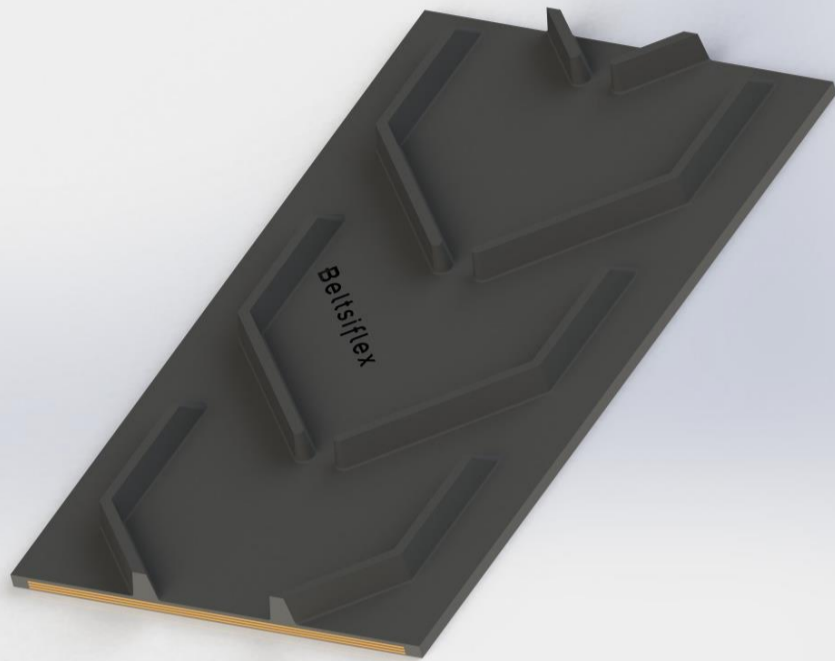
KAF-32



Chevron	Ancho Banda / Belt Width (mm)	Paso / Pitch (mm)
KAF-32/1480	1600	330

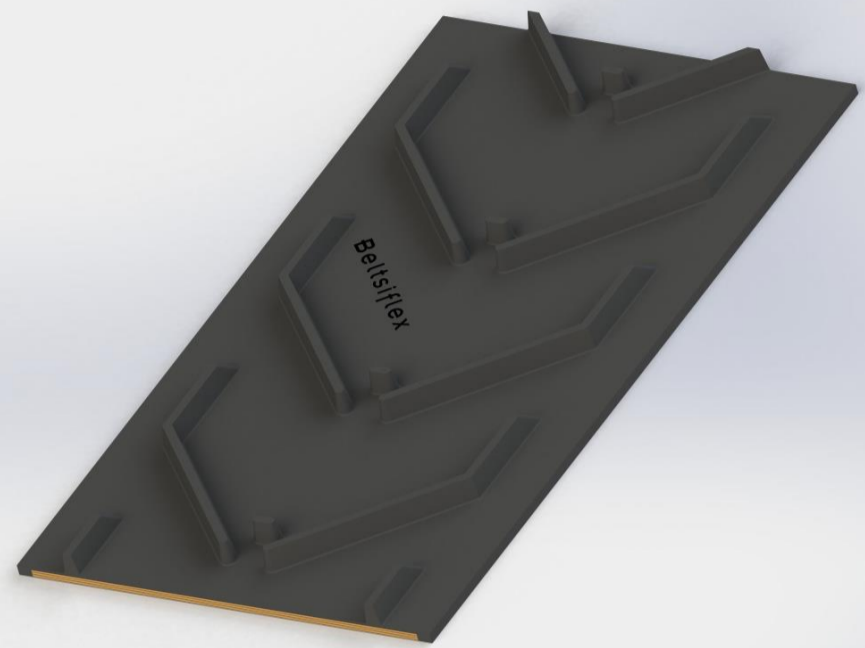
CHEVRONS STANDARDS / Standard Production

KFN-32



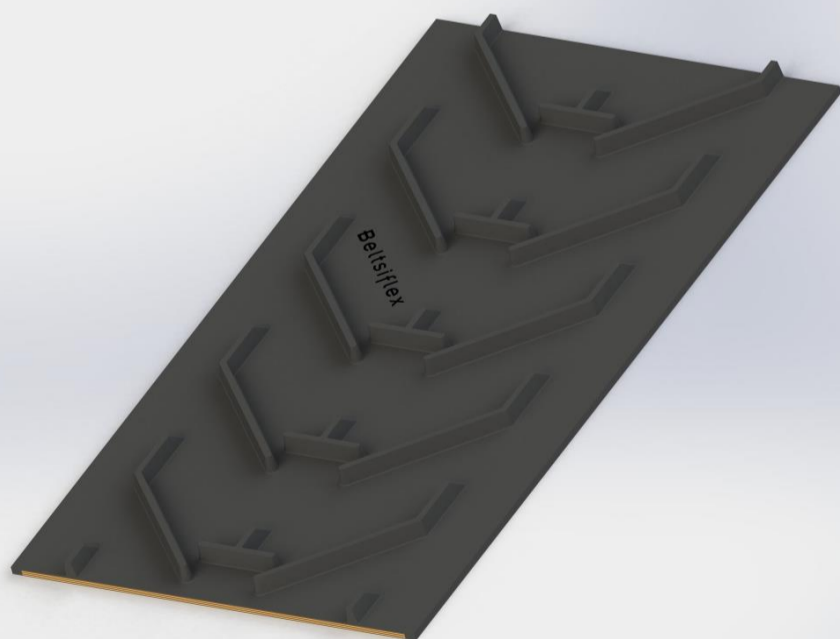
Chevron	Ancho Banda / Belt Width (mm)	Paso / Pitch (mm)
KFN-32/380	400 ÷ 650	300

KFN-32



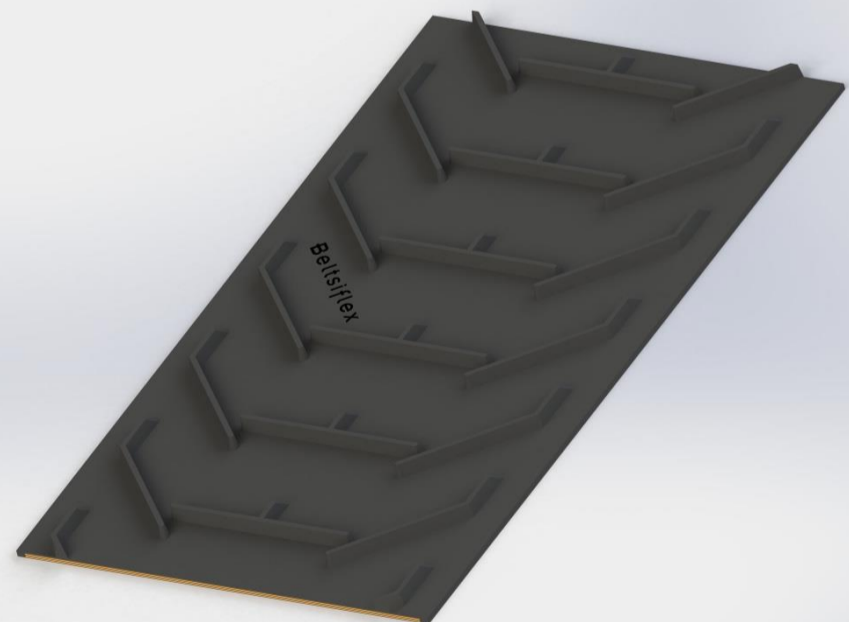
Chevron	Ancho Banda / Belt Width (mm)	Paso / Pitch (mm)
KFN-32/460	500 ÷ 800	300

KFN-32



Chevron	Ancho Banda / Belt Width (mm)	Paso / Pitch (mm)
KFN-32/580	650 ÷ 800	300

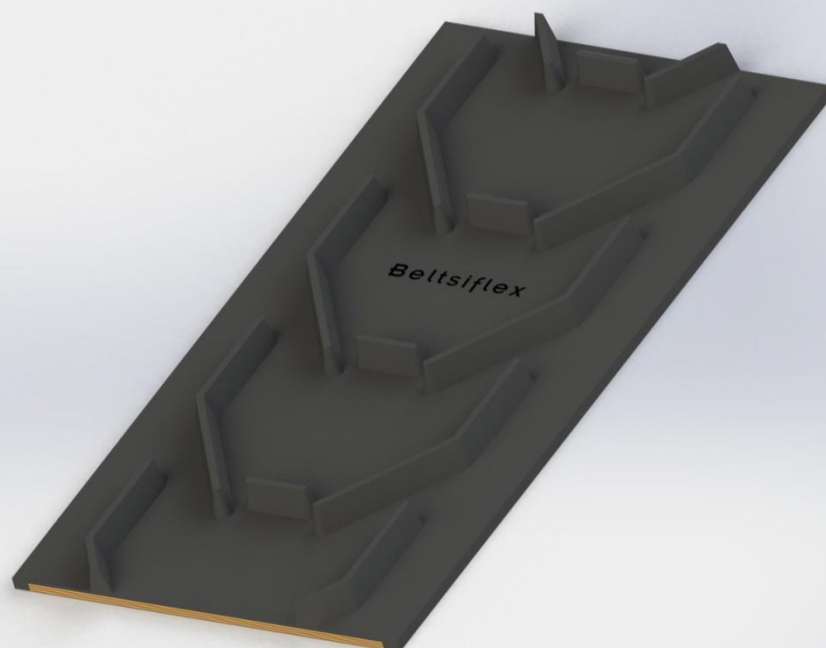
KFN-32



Chevron	Ancho Banda / Belt Width (mm)	Paso / Pitch (mm)
KFN-32/860	1000	300

CHEVRONS STANDARDS / Standard Production

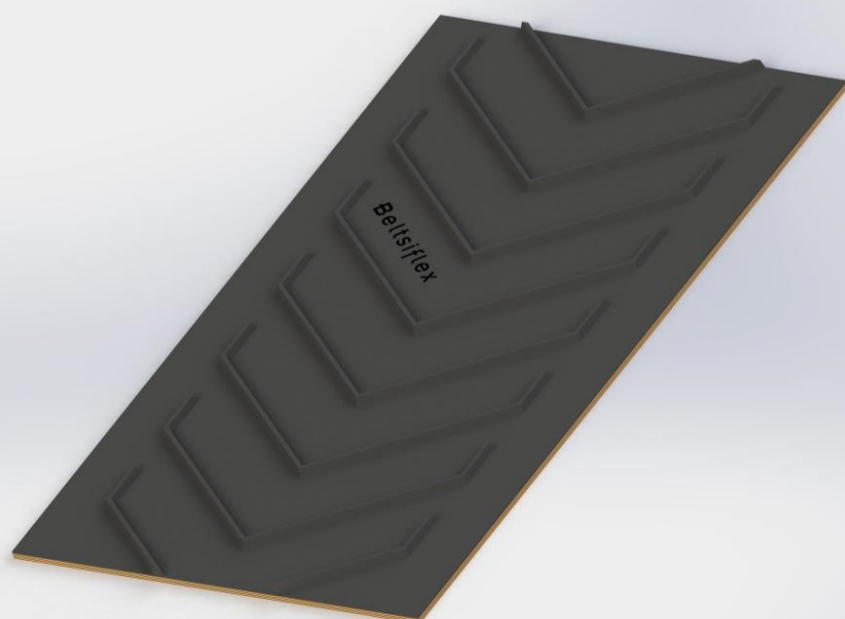
KFN-35



Chevron	Ancho Banda / Belt Width (mm)	Paso / Pitch (mm)
KFN 35/350	400 ÷ 500	250

CHEVRONS SPÉCIAUX / Special Production

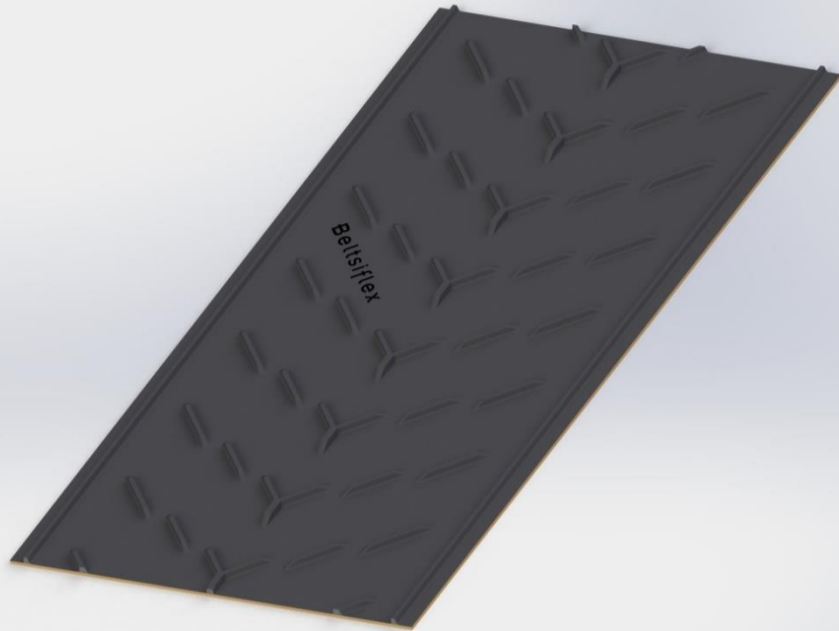
KSN-15



Chevron	Ancho Banda / Belt Width (mm)	Paso / Pitch (mm)
KSN-15/250	400 ÷ 800	150
KSN-15/310	400 ÷ 800	165
KSN-15/470	500 ÷ 1000	250
KSN-15/600	600 ÷ 1200	200
KSN-15/800	800 ÷ 1600	250

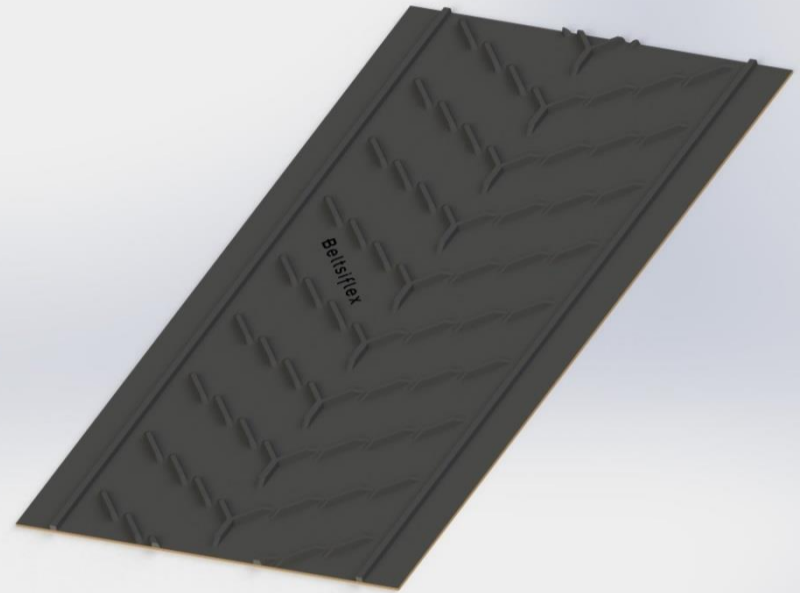
CHEVRONS SPÉCIAUX / Special Production

KSY-15



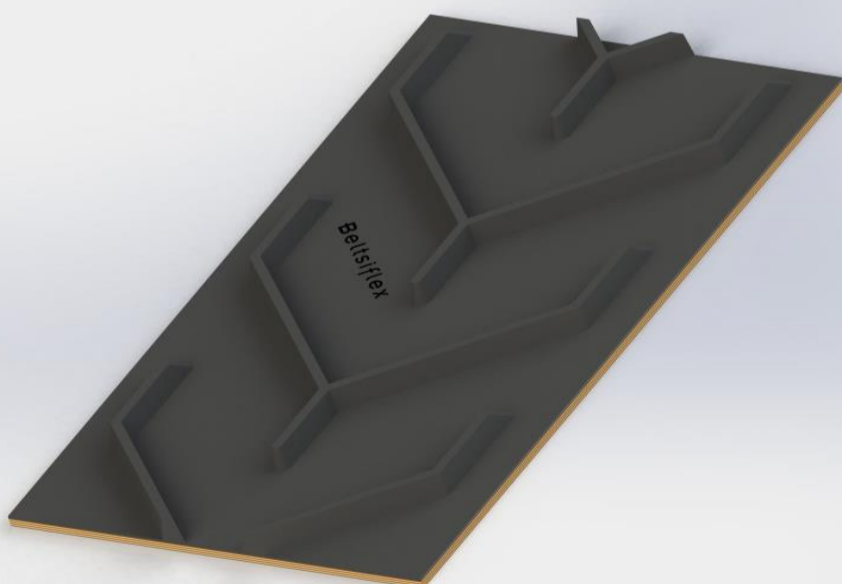
Chevron	Ancho Banda / Belt Width (mm)	Paso / Pitch (mm)	Distancia entre perfiles / Distance between profiles:(mm)
KSY-15/770	900 ÷ 1500	250	Sin perfiles / Without profiles 900

KSY-15



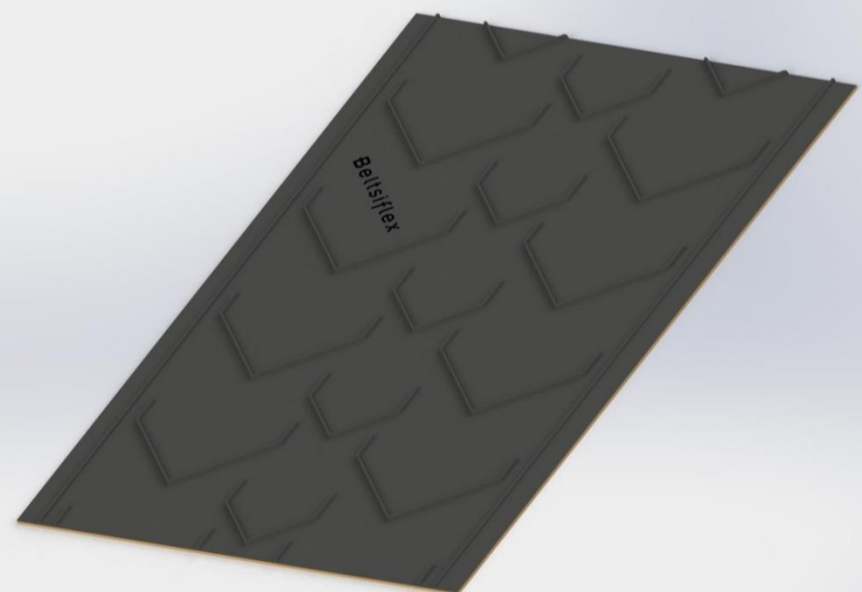
Chevron	Ancho Banda / Belt Width (mm)	Paso / Pitch (mm)	Distancia entre perfiles / Distance between profiles:(mm)
KSY-15/870	1000 ÷ 1500	250	Sin perfiles / Without profiles 940

KSR-15



Chevron	Ancho Banda / Belt Width (mm)	Paso / Pitch (mm)
KSR-15/230	300 ÷ 650	250
KSR-15/420	450 ÷ 800	365
KSR-15/600	650 ÷ 1000	333

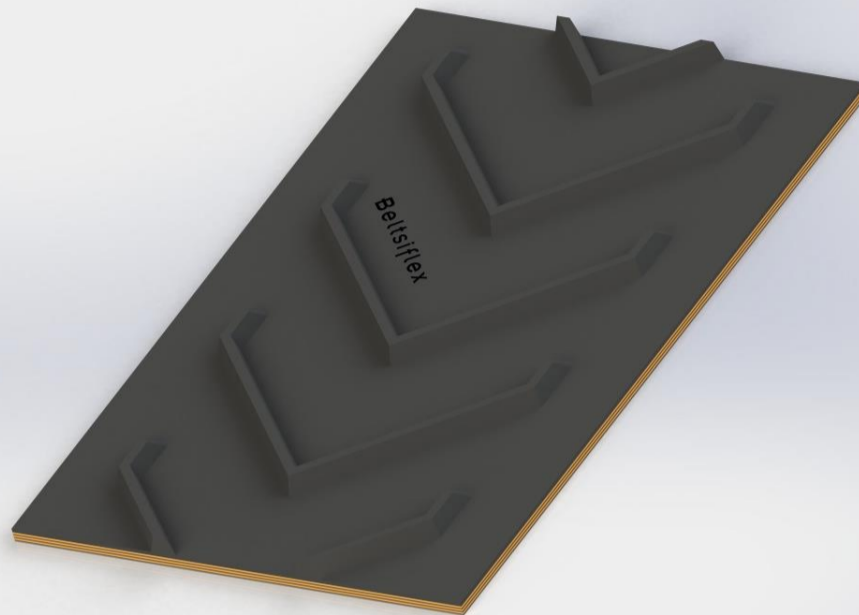
KSV-15



Chevron	Ancho Banda / Belt Width (mm)	Paso / Pitch (mm)	Perfiles / profiles
KSV-15/1500	1500 ÷ 2000	607,5	Sin perfiles / Without profiles Con perfiles / With profiles

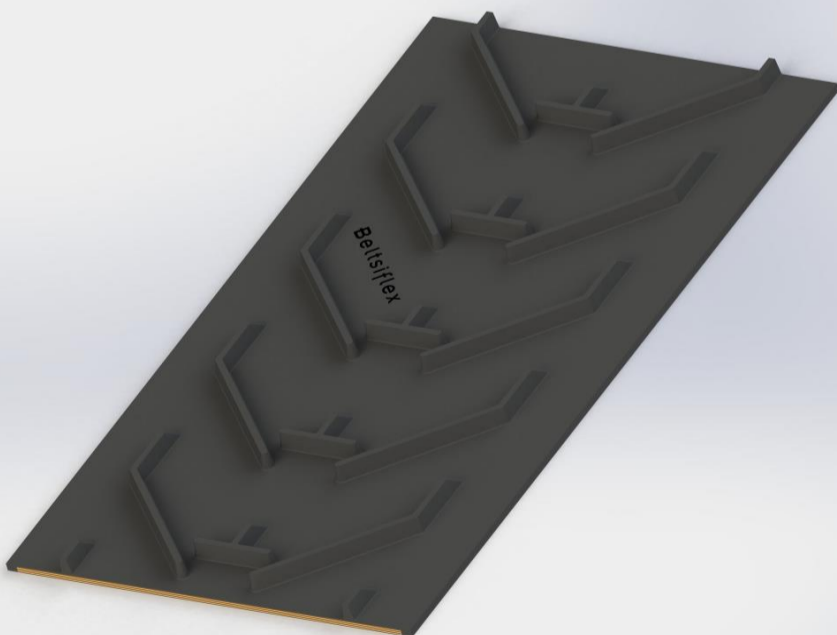
CHEVRONS SPÉCIAUX / Special Production

KSN-20



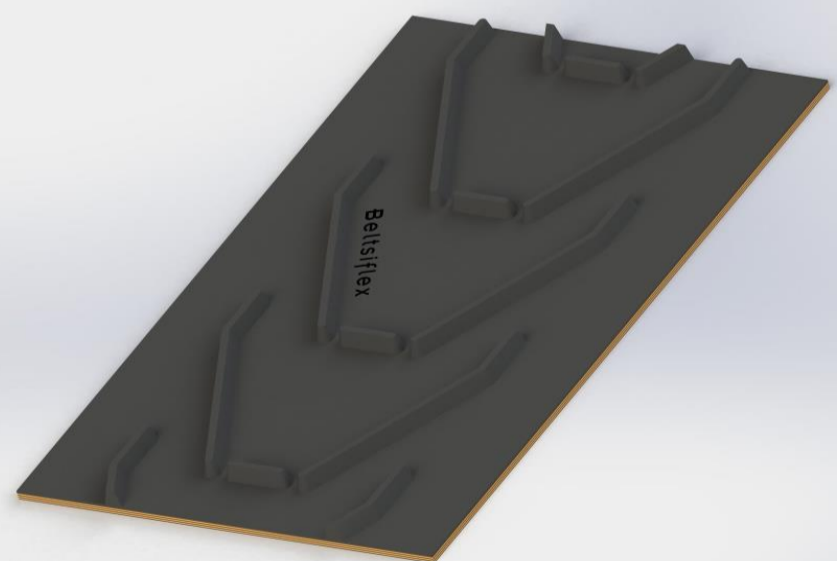
Chevron	Ancho Banda / Belt Width (mm)	Paso / Pitch (mm)
KSN-20/360	400 ÷ 800	200

KSN-20



Chevron	Ancho Banda / Belt Width (mm)	Paso / Pitch (mm)
KSN-20/420	450 ÷ 800	200

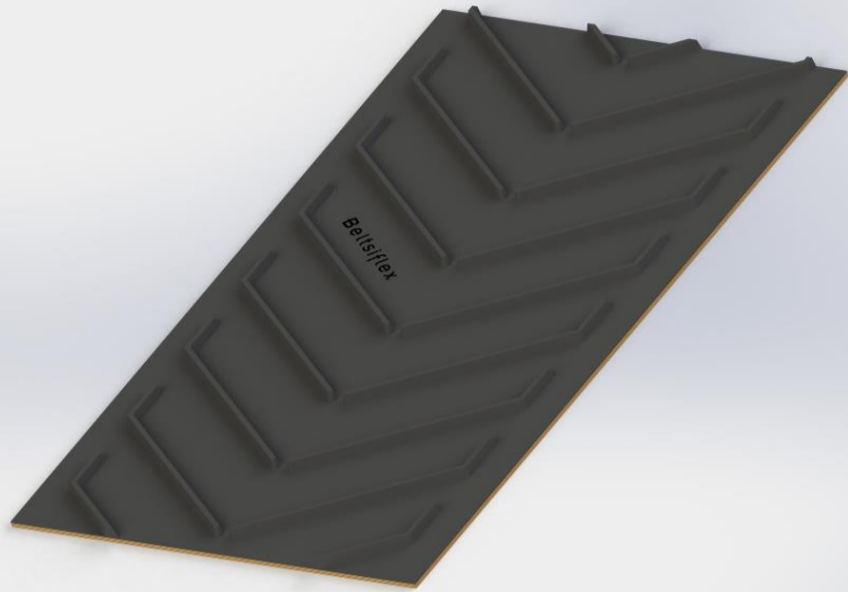
KSN-20



Chevron	Ancho Banda / Belt Width (mm)	Paso / Pitch (mm)
KSN-20/550	600 ÷ 1000	250

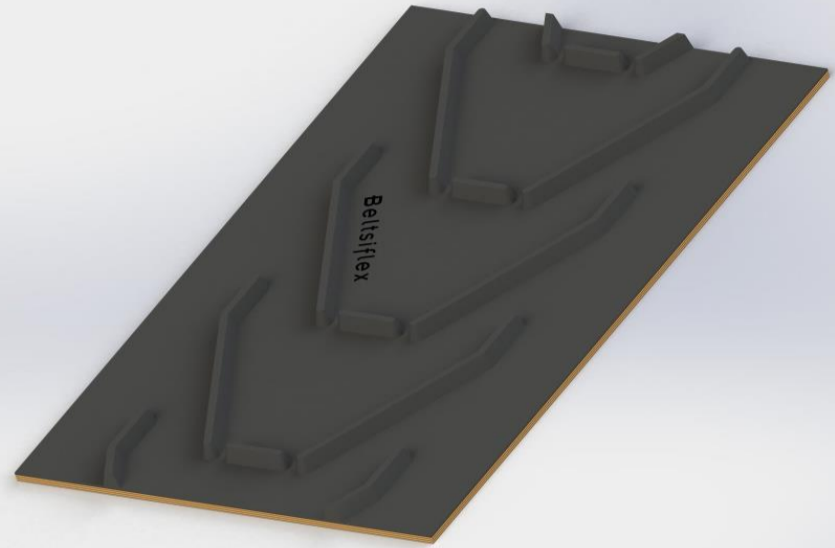
CHEVRONS SPÉCIAUX / Special Production

KSN-25



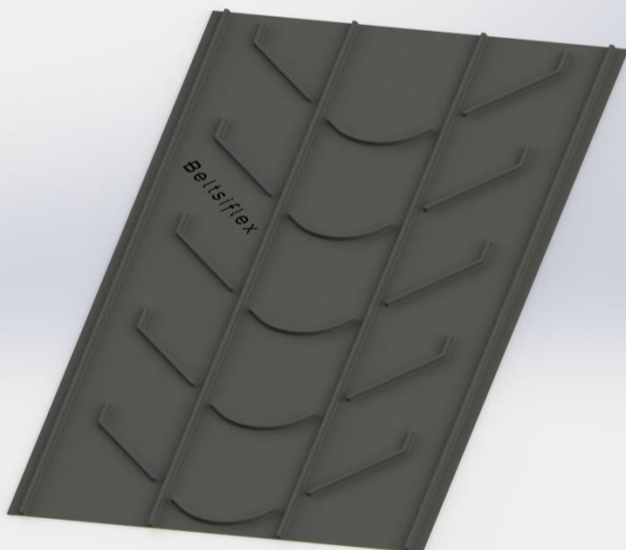
Chevron	Ancho Banda / Belt Width (mm)	Paso / Pitch (mm)
KSN-25/420	500 ÷ 800	250
KSN-25/750	850 ÷ 1200	250
KSN-25/850	950 ÷ 1200	250

KSN-25



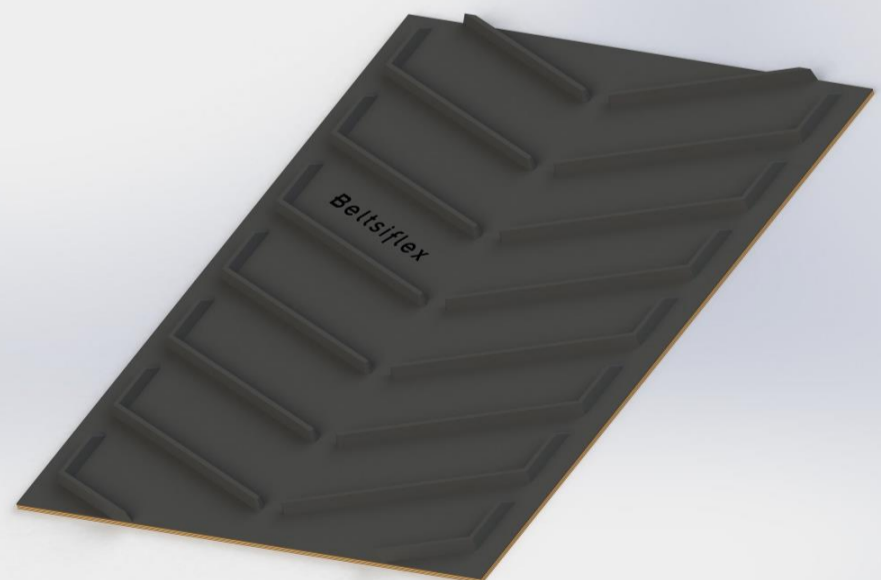
Chevron	Ancho Banda / Belt Width (mm)	Paso / Pitch (mm)
KSN-25/610	650 ÷ 100	250

KSN-25



Chevron	Ancho Banda / Belt Width (mm)	Paso / Pitch (mm)
KSN-25/1180	1200 ÷ 1400	400
KSN-25/1350	1400 ÷ 2000	500

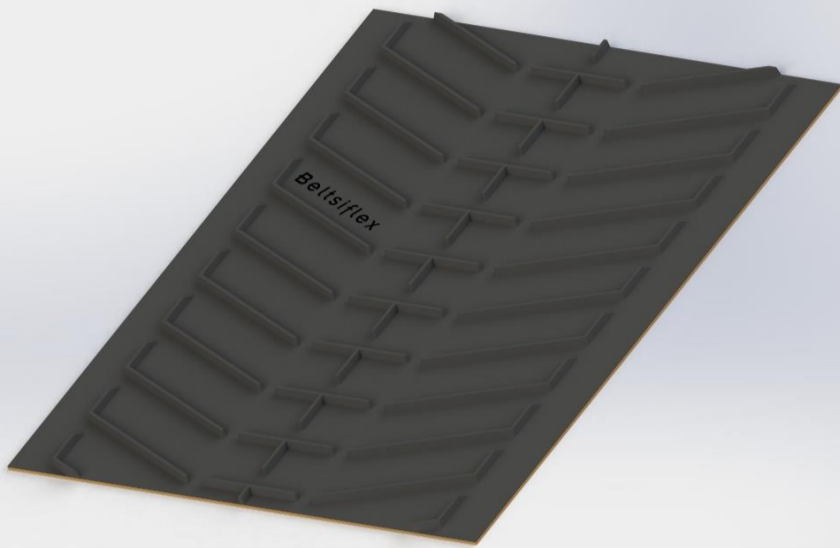
KSN-30



Chevron	Ancho Banda / Belt Width (mm)	Paso / Pitch (mm)
KSN-30/1080	1100 ÷ 2400	250

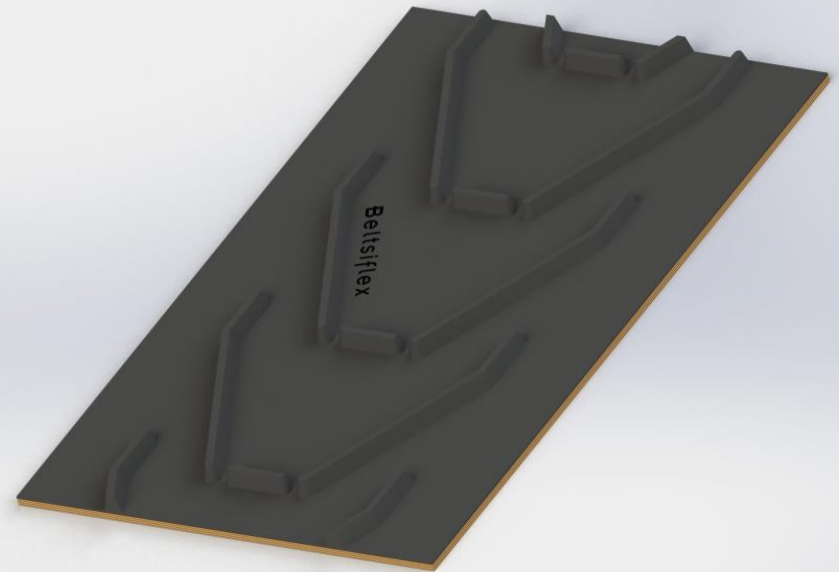
CHEVRONS SPÉCIAUX / Special Production

KSN-30



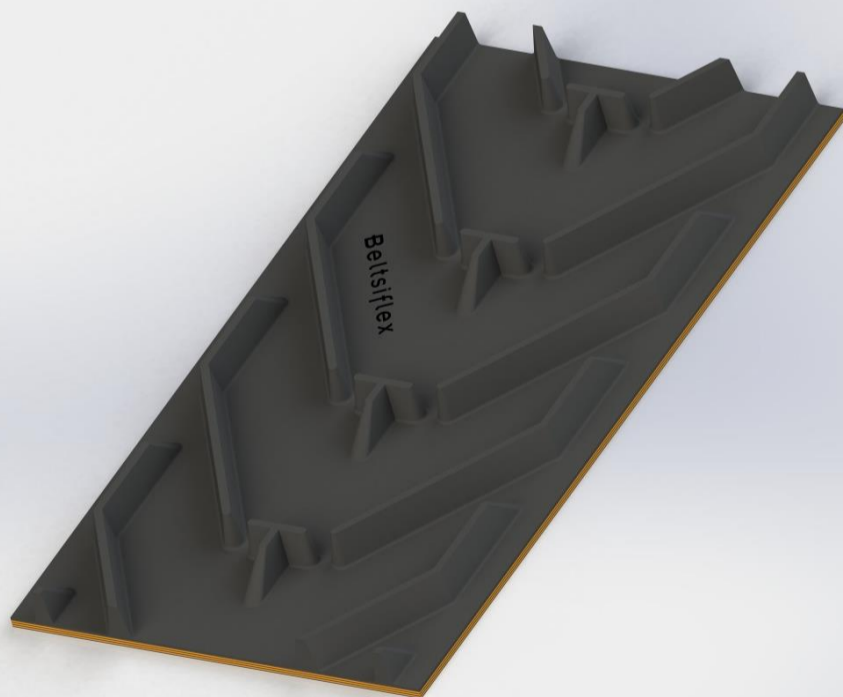
Chevron	Ancho Banda / Belt Width (mm)	Paso / Pitch (mm)
KSN-30/1500	1500 ÷ 2400	250

KSN-35



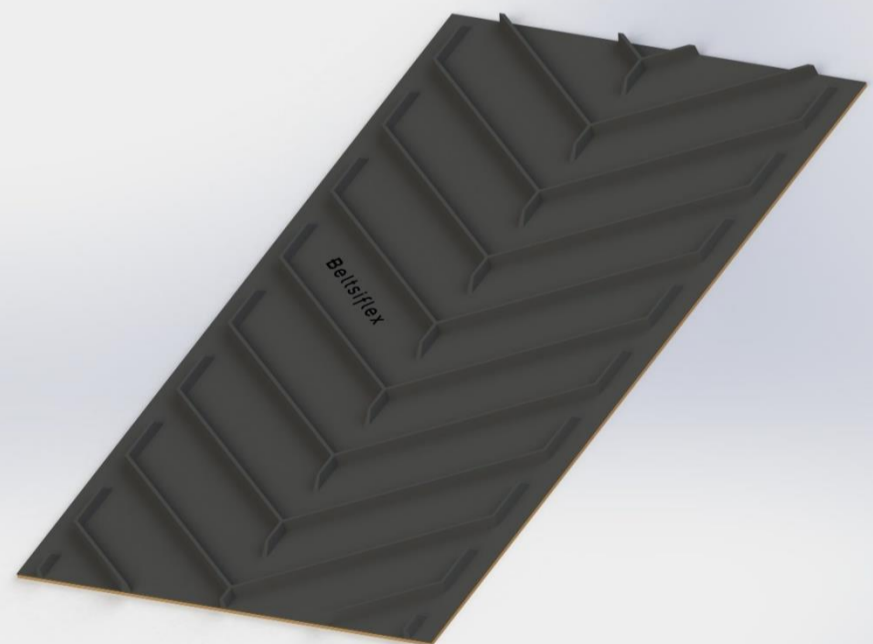
Chevron	Ancho Banda / Belt Width (mm)	Paso / Pitch (mm)
KSN-35/450	500 ÷ 800	250

KSN-35



Chevron	Ancho Banda / Belt Width (mm)	Paso / Pitch (mm)
KSN-35/570	600 ÷ 1000	300

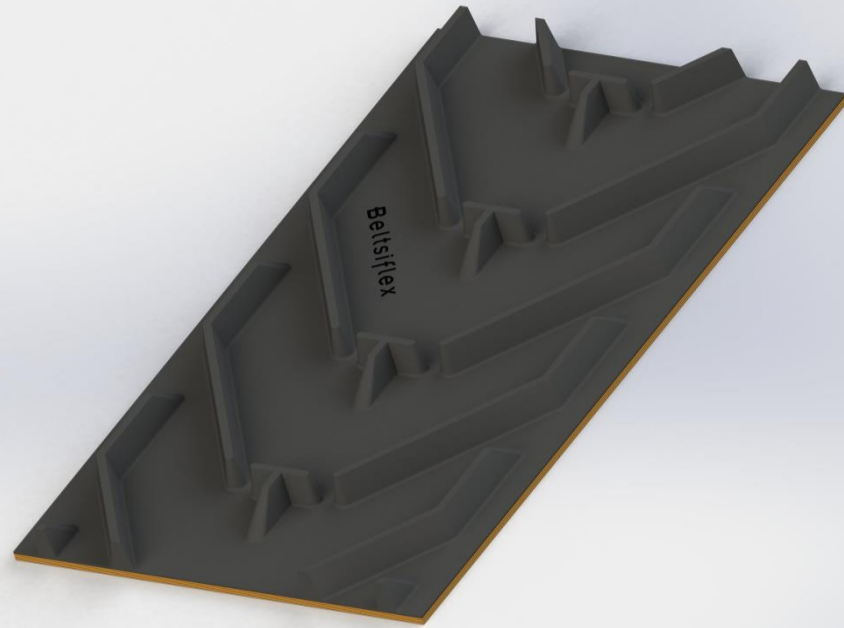
KSN-35



Chevron	Ancho Banda / Belt Width (mm)	Paso / Pitch (mm)
KSN-35/1350	1400 ÷ 1800	330

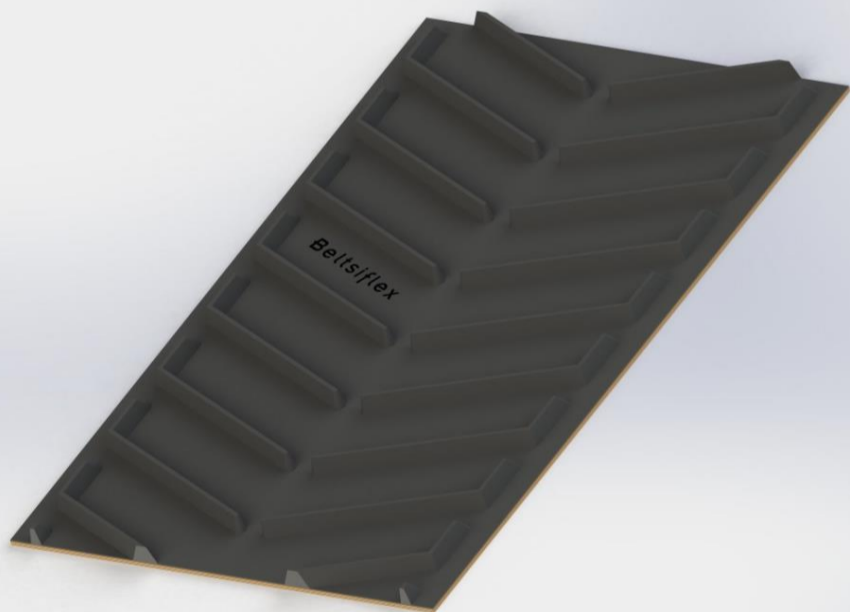
CHEVRONS SPÉCIAUX / Special Production

KSN-50



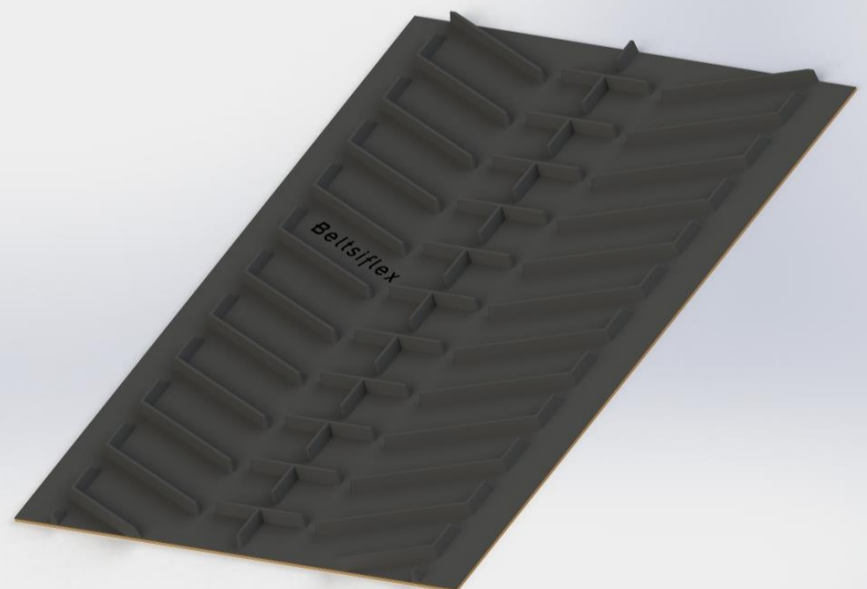
Chevron	Ancho Banda / Belt Width (mm)	Paso / Pitch (mm)
KSN-50/570	600 ÷ 1000	300

KSN-50



Chevron	Ancho Banda / Belt Width (mm)	Paso / Pitch (mm)
KSN-50/1080	1100 ÷ 2400	250

KSN-50



Chevron	Ancho Banda / Belt Width (mm)	Paso / Pitch (mm)
KSN-50/1500	1500 ÷ 2400	250

CHEVRONS SPÉCIAUX SUR DEMANDE / SPECIAL MANUFACTURING

En plus des types de chevron standard et de fabrication spéciale, nous pouvons offrir la construction de tout autre type spécial requis / In addition to the standard range, we can offer the manufacturing of any other special type of chevron required.